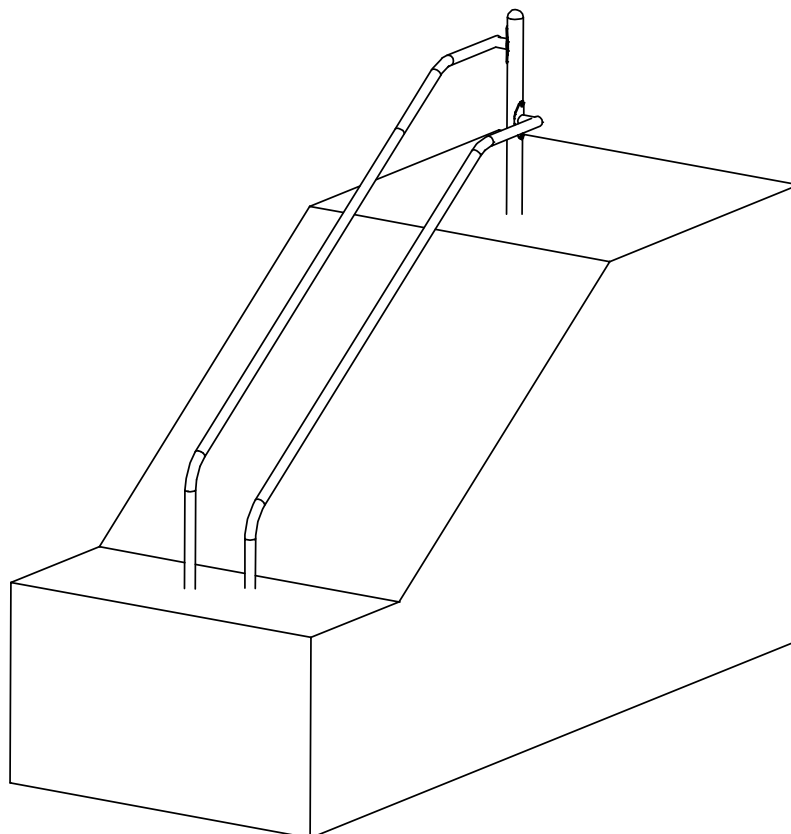




INSTALLATION INSTRUCTIONS
BANNISTER RAIL
PCBAN-15



NO PART OF THIS MANUAL OR DOCUMENT MAY BE COPIED OR RE-PRODUCED IN ANY FORM OR BY ANY MEANS WITH OUT THE EXPRESS WRITTEN PERMISSION OF SMP (PLAYGROUNDS) LTD.

email: sales@smp.co.uk
www.smp.co.uk

INTENTIONALLY LEFT BLANK

PROCEDURES

1 SPECIFICATIONS

REFERENCE		PCBAN-15
WEIGHT	kg	53.12
HEAVIEST PART	kg	20
LARGEST PART LxWxH	m	3.2X0.15X3.1
CONCRETE	m ³	0.23
MAX FREEFALL HEIGHT	m	1.02
FALLING SPACE AREA	m ²	9.06
MANHOURS	hr	3
MANPOWER		2
CONSTRUCTIONAL SPACE	m	6.0 x 3.0

Should this item be installed with a natural grass surface. We recommend the consideration of an erosion protection system.

The concrete foundations indicated are for average ground. Care should be taken concerning abnormal conditions.

Concrete mix is recommended at:

1 part cement;
 2 parts sand;
 4 parts aggregate;
 by volume with 20mm aggregate
 (20N/mm² min compressive strength)

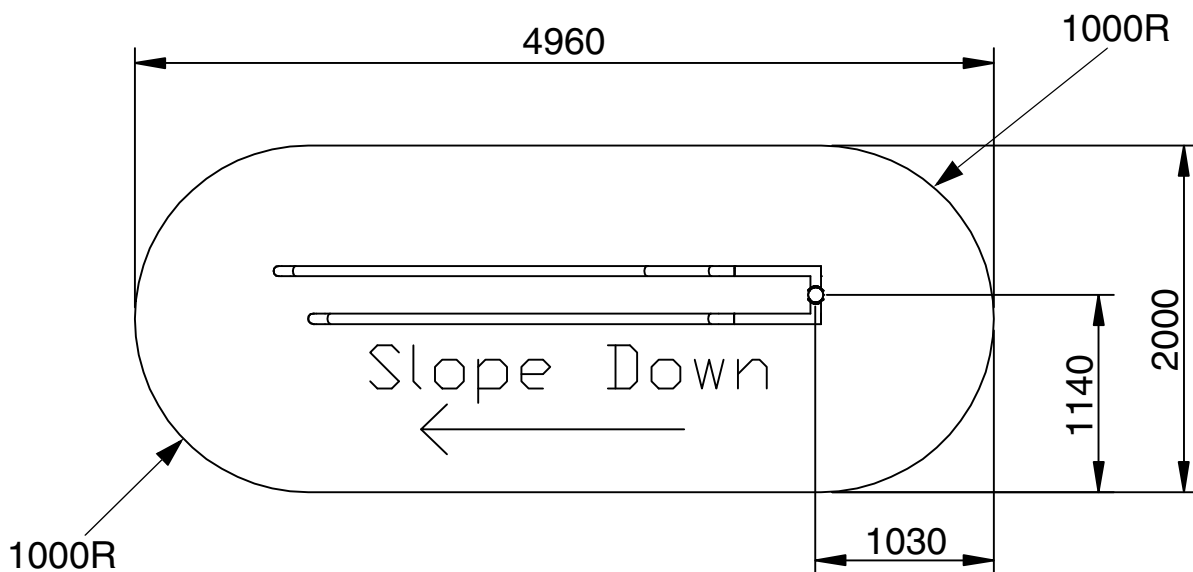


FIG.1 FALLING SPACE AREA

2 PARTS LIST

ITEM	CODE	DESCRIPTION	QTY	WEIGHT (kg)
1	31003001	BANNISTER POST	1	12.00
2	31003002	TOP BANNISTER	1	20.00
3	31003003	BOTTOM BANNISTER	1	18.00
4	19023801	NEXUS GASKET	2	0.080
5	38001019	SADDLE WASHER	4	0.002
6	10301000	SHOCKPROOF WASHER	4	0.002
7	10121040	RESISTORX BOLT M10X40	4	0.037
	10121000	TORX TOOL M10	1	0.002
LOOSE FILL				
8	EPLUG	BANNISTER GROUTING LUG	2	3.000

3 INSTALLATION & ASSY PROCEDURES

3.1 SAFE WORKING PRACTISE

A full risk assessment should be carried out prior to commencing the installation, which will be specific to the site selected. The major risks associated with purely the assembly of this product are highlighted below, which can form part of this overall assessment.

3.2 RISKS:

- i) Large parts which could be difficult to lift or handle.
- ii) Structure unstable until concrete footings have fully cured.

3.3 CONTROL MEASURES:

- i) All staff working on installation to wear suitable PPE including Toe Protective Shoes and Gloves.
- ii) Any staff or other persons on site, not working directly on the installation, to be kept away from the installation. Ensure adequate personal and equipment are on site to handle and support the structure whilst it is being assembled.

3.4 PREPARATION

- i) All equipment assembly and fixing must conform to EN1176.
- ii) Before commencing the installation the surrounding area must be sufficiently fenced and signs erected to warn the public of the risk of injury.

Tools: Plumblines, 5m Tape measure, Spirit level, Torque wrench, 5/16" AF Socket & Driver, M10 Torx tools (Supplied with unit).

Minimum Personal Protective Equipment: Gloves, Armoured boots.

3.5 PRE-INSTALLATION INSPECTION

- i) Inspect all parts for damage (which may have occurred during transportation & storage). Finish Coatings, if found to be damaged should be made good before erection. Any damaged or missing parts must be replaced. To ensure the required hole threads are free from contamination it is recommended that they are brushed out and/or tapped out, to save time during erection.
- ii) Before commencing installation, the surrounding area must be sufficiently fenced and signs erected to warn the public of the risk of injury.

3.6 INSTALLATION

- i) Mark out foundations and excavate holes. (refer to site plan for unit location)
- ii) Place Bannister Posts (item1) into excavation, pack up to required height making sure the item is square and plum. See FIG.2 , 3 or 4 for concrete positions.

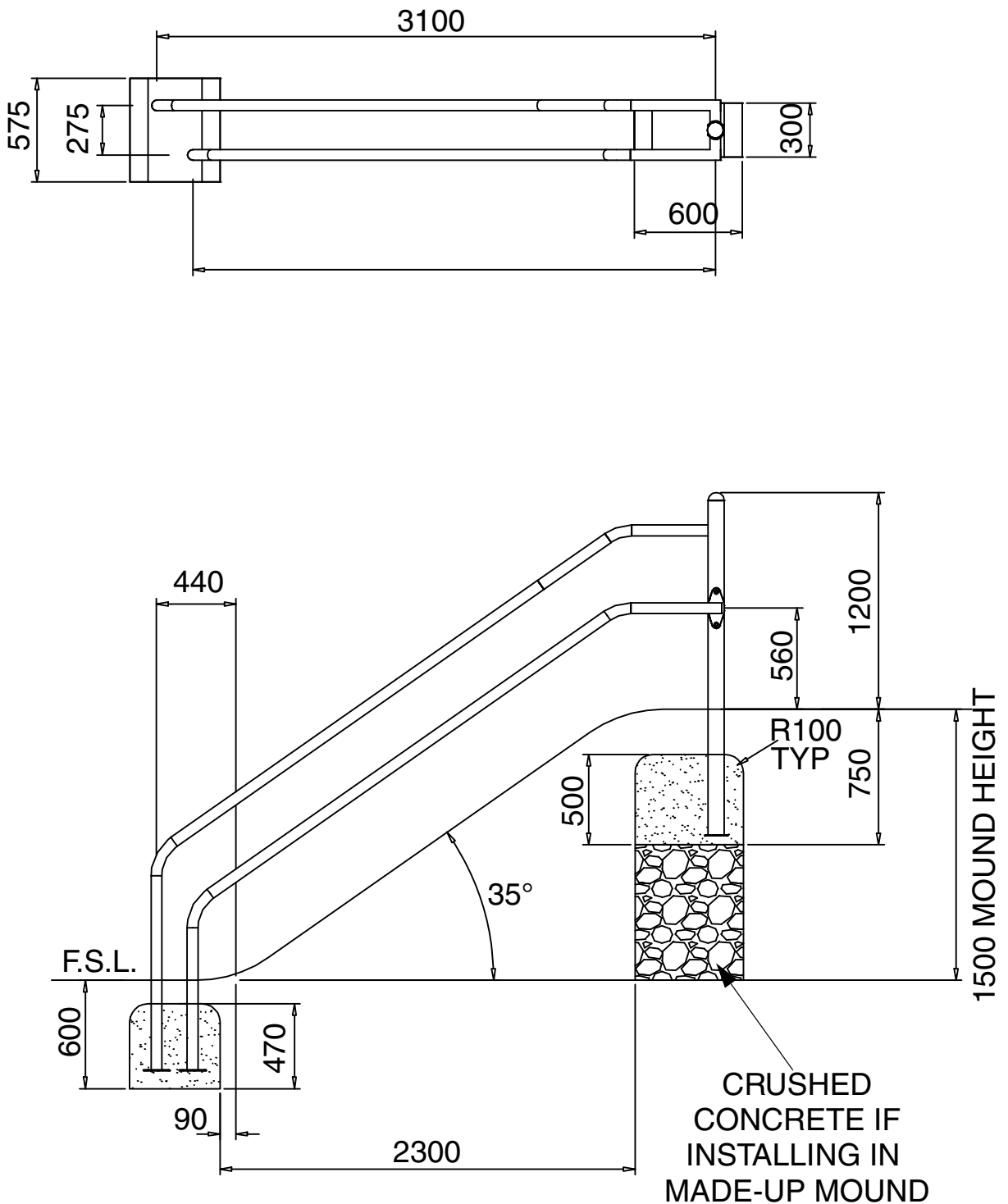


FIG.2 GRASS INSTALLATION

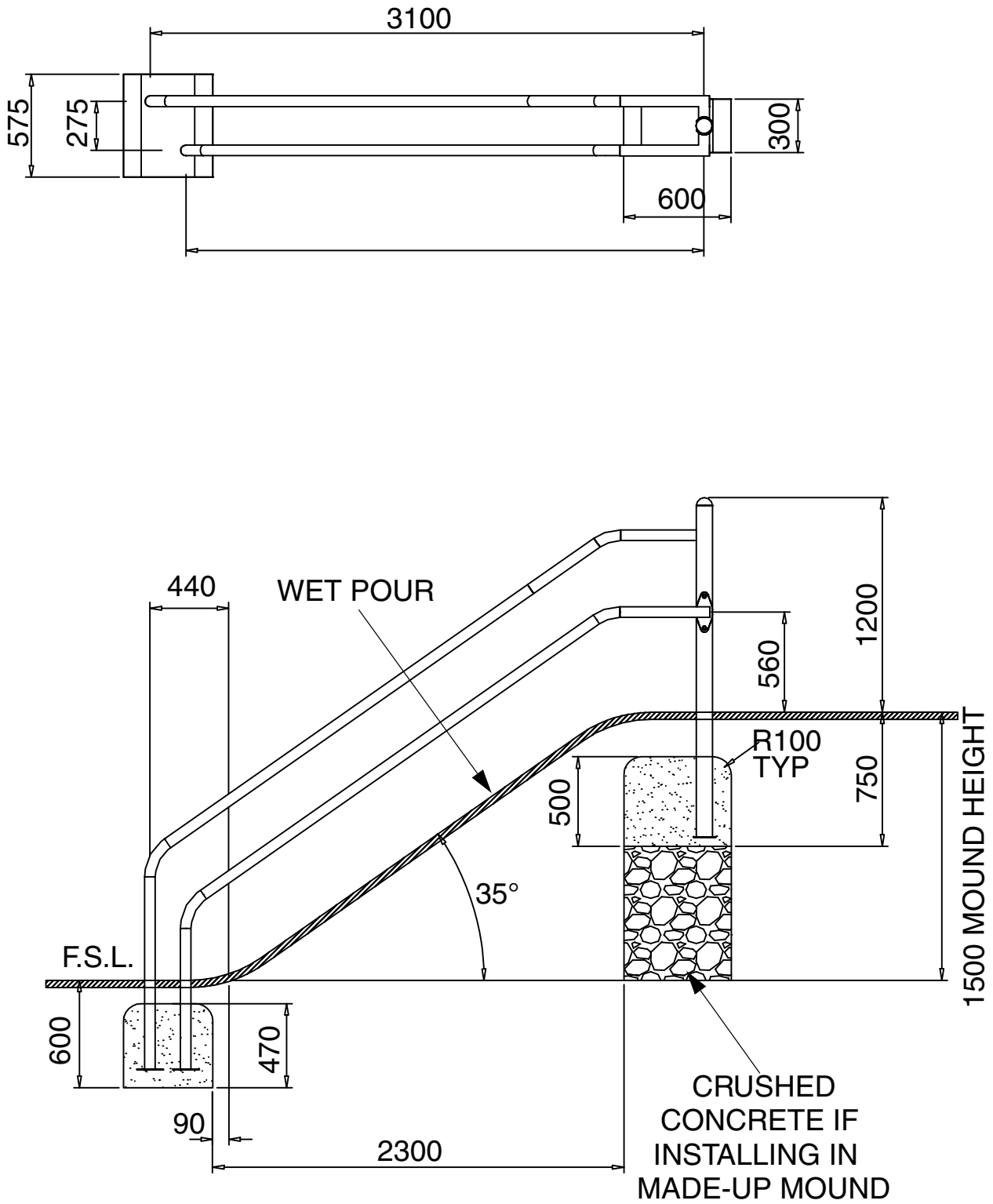


FIG.3 WET POUR INSTALLATION

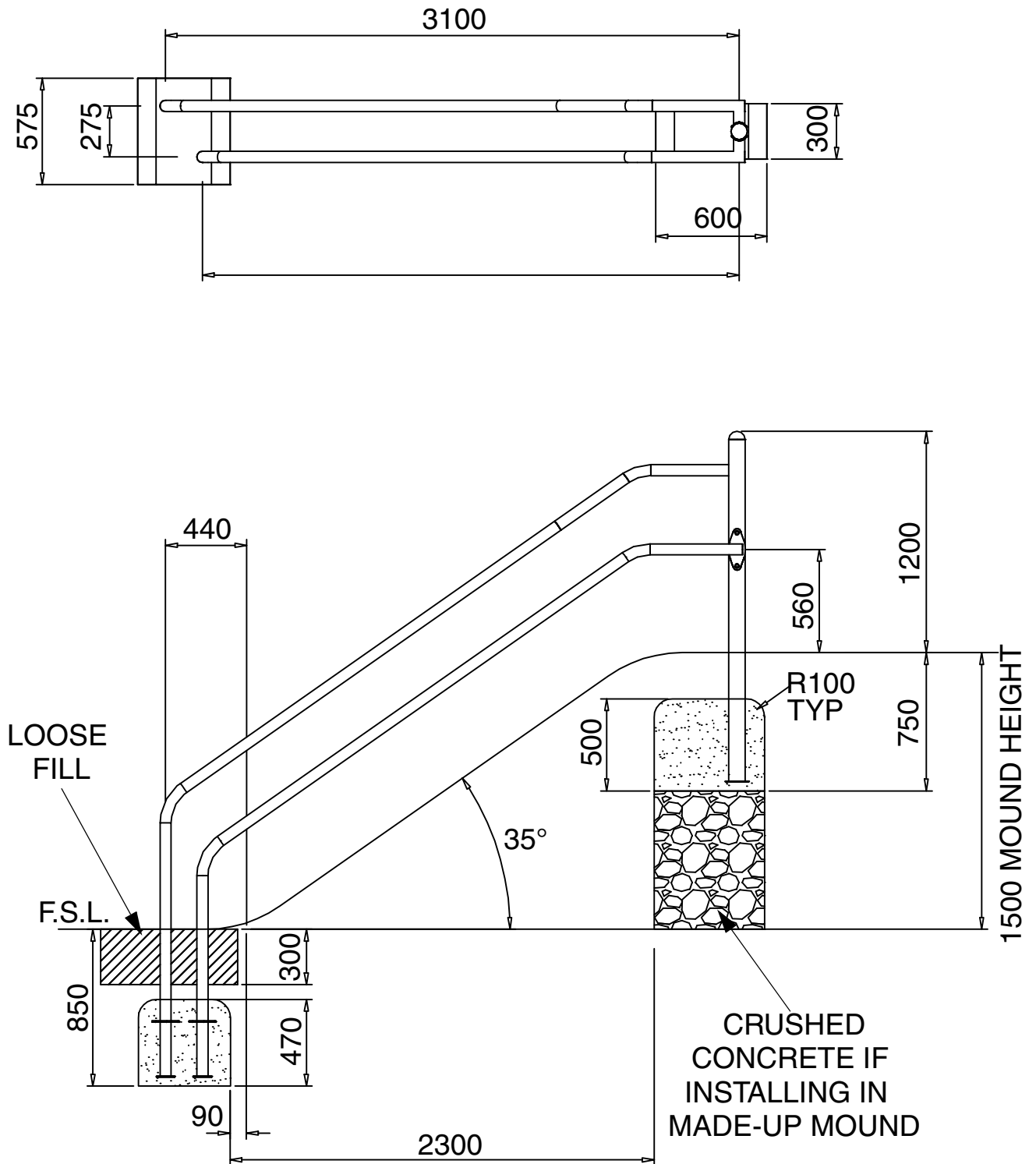
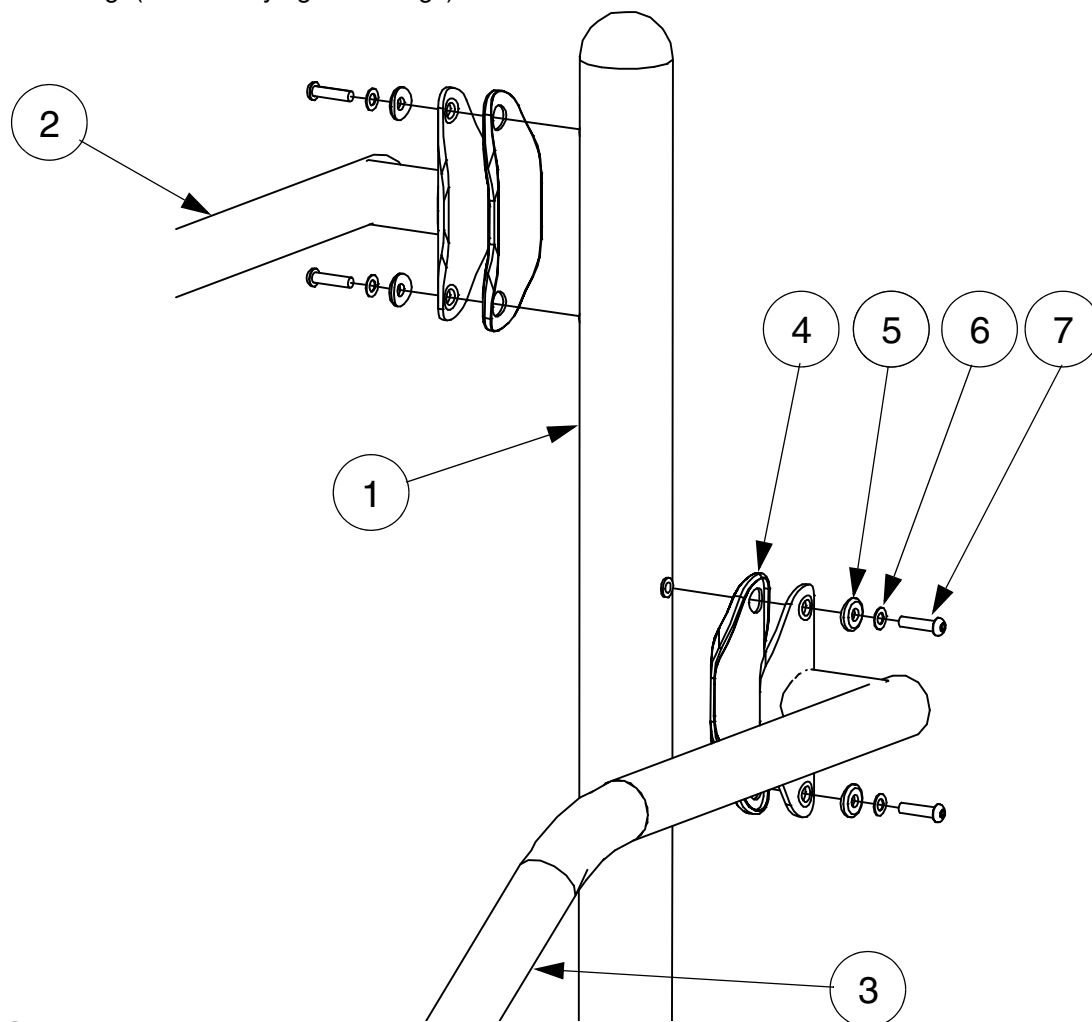


FIG.4 GRASS WITH LOOSE FILL INSTALLATION

- iii) Attach Top Bannister (item 2) to the upper fixing holes in the Bannister Post (item 1), using 2 off M10 x 40 Resistorx bolts (item 7), M10 Shockproof Washers (item 6) and M10 Saddle Washers (item 5). Make sure the Nexus Gasket (item 4) is place in between the Bannister Post (item 1) and the Top Bannister (item 2) before fixing. (Do not fully tighten fixings) See FIG.5.
- iv) Attach Bottom Bannister (item 3) to the lower fixing holes in the Bannister Post (item 1), using 2 off M10 x 40 Resistorx bolts (item 7), M10 Shockproof Washers (item 6) and M10 Saddle Washers (item 5). Make sure the Nexus Gasket (item 4) is place in between the Bannister Post (item 1) and the Bottom Bannister (item 3) before fixing. (Do not fully tighten fixings) See FIG.5.

**FIG.5**

- v) Make sure all items are square and plum and in the correct position then fully tighten all fixings to a maximum torque setting 20-25Nm. It is very important not to exceed this setting as the inserts will loosen.
- vi) Fill holes with concrete ensure full volume of concrete is used. The top of the concrete should gradually (1:100) slope down & outwards locally from the equipment frame to the required level to form a water shed. Allowance should be made for any special surfacing.
- vii) Keep installation off limits to the public until concrete has completely cured. (Recommended initial curing time 48hrs).

4 POST INSTALLATION INSPECTION

CHECK

TICK



- 1 The unit is installed at the correct height.
- 2 All fixings are tightened and have no protruding sharp edges.
- 3 Paint work and rope is not damaged.
- 4 Concrete foundations & all fixings are secure.
- 5 Concrete has a water shed away from legs.
- 6 Site is clear of all tools, any assembly aids and rubbish.
- 7 Remove any warning signs.



INTENTIONALLY LEFT BLANK