



Playgrounds

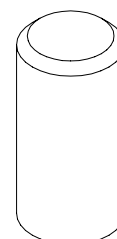
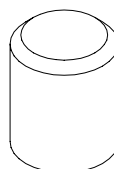
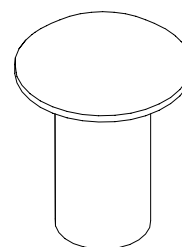
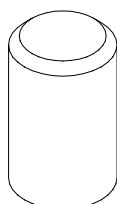
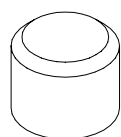
INSTALLATION INSTRUCTIONS

RUBBER STEPPING STONES

IL200SS, IL300SS, IL400SS, IL500SS

MUSHROOM TOPS

ILMUSTOP



INTENTIONALLY LEFT BLANK

1 SPECIFICATIONS

REFERENCE	STANDARD INSTALLATION				LOOSE FILL INSTALLATION				
	IL200SS	IL300SS	IL400SS	IL500SS	IL200SS	IL300SS	IL400SS	IL500SS	
STEP HEIGHT (h)	m	0.20	0.30	0.40	0.50	0.10	0.20	0.30	0.40
POST HEIGHT (H)	m	0.45	0.55	0.65	0.75	0.65	0.75	0.85	0.95
STEP DIAMETER (D)	m	Ø0.25							
WEIGHT	kg	12.40	17.79	23.17	28.55	13.17	18.55	23.93	29.31
HEAVIEST PART	kg	9	11.5	15	17	9	11.5	15	17
LARGEST PART ØxL	m	Ø0.25x0.2	Ø0.25x0.3	Ø0.25x0.4	Ø0.25x0.5	Ø0.25x0.2	Ø0.25x0.3	Ø0.25x0.4	Ø0.25x0.5
CONCRETE	m ³	0.056							
MINIMUM SPACE ØxH	m	Ø3.25x2.70	Ø3.25x2.80	Ø3.25x2.90	Ø3.25x3.00	Ø3.25x2.60	Ø3.25x2.70	Ø3.25x2.80	Ø3.25x2.90
MAX FREEFALL HEIGHT	m	0.20	0.30	0.40	0.50	0.10	0.20	0.30	0.40
FALLING SPACE	m ²	8.5							
IMPACT AREA (WET POUR)	m ²	4.25							
RUBBER TILES 1m x 1m		7							
LOOSE FILL AREA (SAND/BARK)	m ²					9.5			
MANHOURS	hr	2							
MANPOWER		1							
CONSTRUCTIONAL SPACE	m	3 x 3	3 x 3	3 x 3	3 x 3	3 x 3	3 x 3	3 x 3	3 x 3
MUSHROOM DIA (D1)	m	Ø0.46							

NOTE: Stepping stones fitted with mushroom tops will be 0.10m higher than step height 'h'.

All dimensions in metres.

Concrete mix is recommended at:
 1 part cement;
 2 parts sand;
 4 parts aggregate;
 by volume with 20mm aggregate
 (20 N/mm² min compressive strength)

The freefall height of each stepping stone is less than 0.6m and therefore in accordance with EN1176 it does not strictly require impact absorbing surfacing which has been fully tested to EN1177. However, if it is being installed on hard surfaces such as concrete or tarmac, we recommend that a minimum surfacing area as indicated in the chart above is specified to enhance the safety of its provision. If it is being provided on a grass surface, a suitable level of maintenance will be required to ensure the impact attenuation properties are not significantly reduced.

Constructional Space (shown in the above table) is the approximate working area required to layout and assemble the equipment.

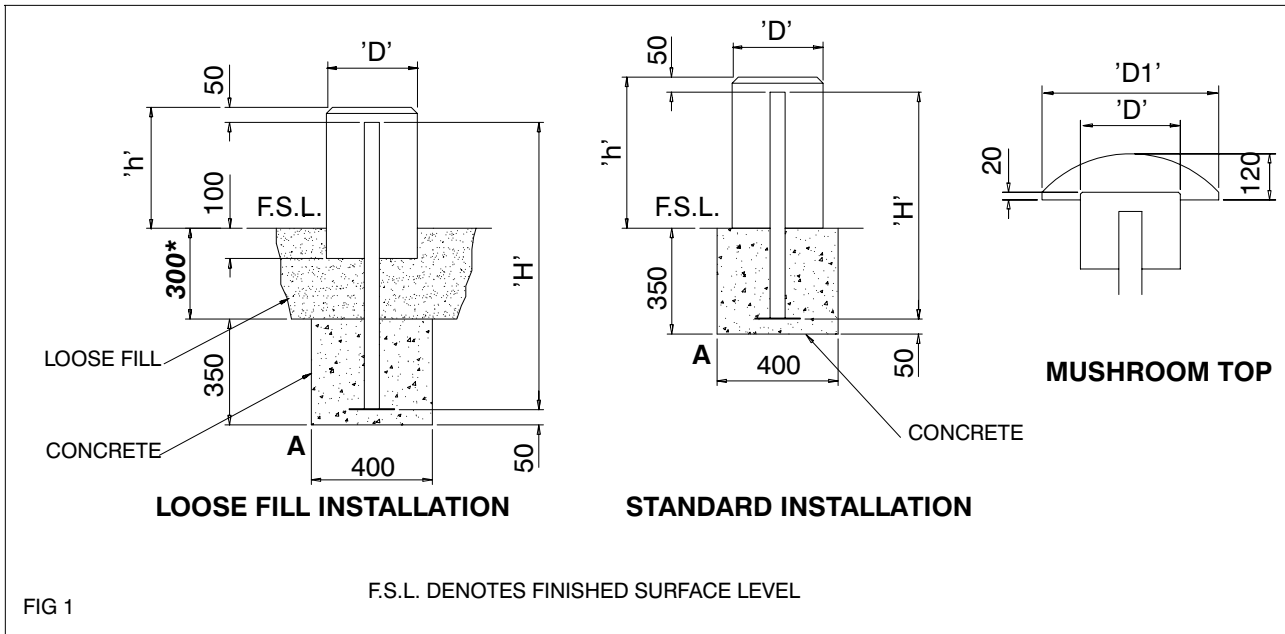
For the safe operation of this equipment it must be installed on horizontal ground with the required minimum space.

If two or more stepping stones are being installed in close proximity to each other to provide continuity of the play activity, the recommended gap between each stepping stone is 300mm. Care should however be taken to ensure that one stepping stone does not encroach into the potential fall area at the sides of the neighbouring stepping stone.

Tools: Plumblines, 5m tape measure, Spirit level.

Adhesive:- Evo-Play A1068 or Evo-Sport 9532

Minimum Personal Protective Equipment:- Gloves, Armoured boots.- Also refer to adhesive health and safety sheet.

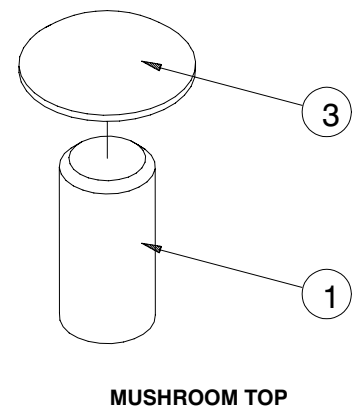
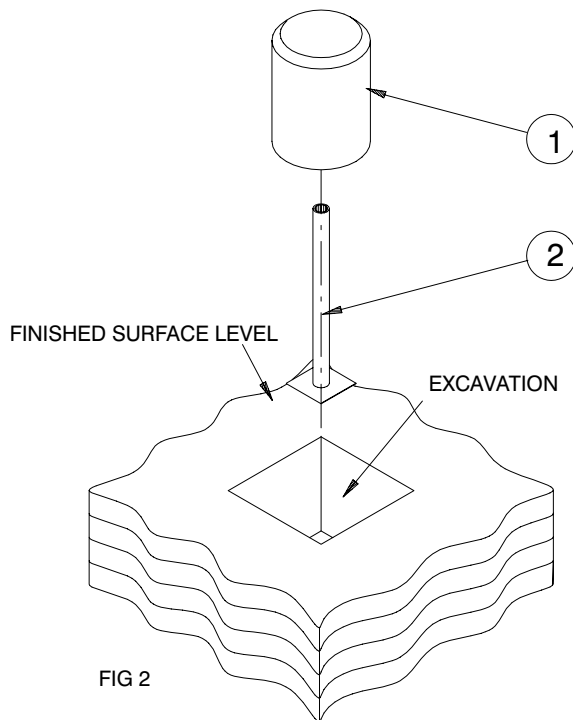


***NOTE:** Generally, it is recommended that loose fill surfaces are installed to a depth of 300mm. However with certain loose fill materials, a greater depth may be required. This will need to be determined by allowing 200mm for dispersal in addition to the thickness required to achieve the required critical fall height.

2 INSTALLATION PARTS LIST

ITEM No. STANDARD INSTALLATION	ITEM No. LOOSE FILL INSTALLATION	CODE	DESCRIPTION	QTY.
1	1	IL200SSB	STEP 200 HIGH-BLACK	1
		IL200SSG	STEP 200 HIGH-GREEN	
		IL200SSR	STEP 200 HIGH-RED	
2		SSLUG450	SUPPORT POST 450 LONG	1
	2	SSLUG650	SUPPORT POST 650 LONG	1
1	1	IL300SSB	STEP 300 HIGH-BLACK	1
		IL300SSG	STEP 300 HIGH-GREEN	
		IL300SSR	STEP 300 HIGH-RED	
2		SSLUG550	SUPPORT POST 550 LONG	1
	2	SSLUG750	SUPPORT POST 750 LONG	1
1	1	IL400SSB	STEP 400 HIGH-BLACK	1
		IL400SSG	STEP 400 HIGH-GREEN	
		IL400SSR	STEP 400 HIGH-RED	
2		SSLUG650	SUPPORT POST 650 LONG	1
	2	SSLUG850	SUPPORT POST 850 LONG	1
1	1	IL500SSB	STEP 500 HIGH-BLACK	1
		IL500SSG	STEP 500 HIGH-GREEN	
		IL500SSR	STEP 500 HIGH-RED	
2		SSLUG750	SUPPORT POST 750 LONG	1
	2	SSLUG950	SUPPORT POST 950 LONG	1
	3	ILMUSTOP	MUSHROOM TOP	1

CONCRETE SPECIFICATIONS	
BLOCK	L x W x Depth
A	400x400x350



3 INSTALLATION PROCEDURES.

- i) Before commencing installation the surrounding area must be sufficiently fenced and signs erected to warn the public of the risk of injury.
- ii) Mark out foundations and excavate holes. (refer to site plan for unit location)
- iii) Position support post (item 2) into excavation, pack up to height required, level and plumb.
- iv) Brace support post in position.
- v) Fill holes with concrete to required level, taking into account any safer surfacing requirements. Ensure full volume of concrete is used. The top should slope down & outwards locally from the equipment upstand to the required level to form a water shed.
- vi) Apply adhesive to support post and slide step (item 1) onto post until it is fully home.
- vii) MUSHROOM TOP (ILMUSTOP) ONLY: Apply adhesive to the top face of the stepping stone (item 1), and firmly press the mushroom top (item 3) on.
- viii) Keep installation off limits to the public until, concrete has completely cured. (Recommended initial curing time 48hrs).

3.1 POST INSTALLATION INSPECTION**CHECK****CHECK**

- | | | |
|----------|---|--------------------------|
| 1 | The unit is installed at the correct height. | <input type="checkbox"/> |
| 2 | No protruding sharp edges. | <input type="checkbox"/> |
| 3 | Paint work is not damaged. | <input type="checkbox"/> |
| 4 | Concrete foundations are secure. | <input type="checkbox"/> |
| 5 | Concrete has a water shed away from legs. | <input type="checkbox"/> |
| 6 | Rubber steps are secure. | <input type="checkbox"/> |
| 7 | Adequate provision of impact absorbing surfacing and no obstructions or trip points within the equipments falling space. If a grass surface has been selected, ensure it is in good condition with no sharp stones or other contaminates. | <input type="checkbox"/> |
| 8 | Site is clear of all tools and rubbish. | <input type="checkbox"/> |
| 9 | Remove any warning signs. | <input type="checkbox"/> |