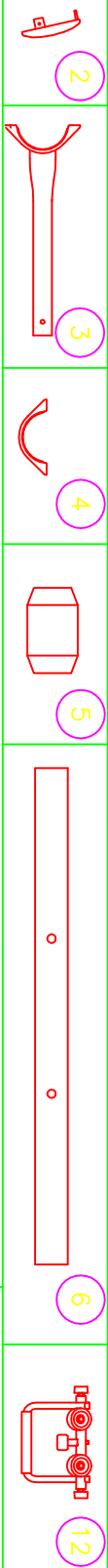
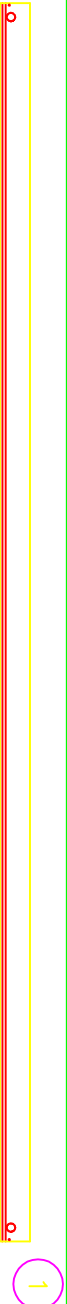


KB 6', 8', 12', & 20' STRAIGHT TRACK RIDES

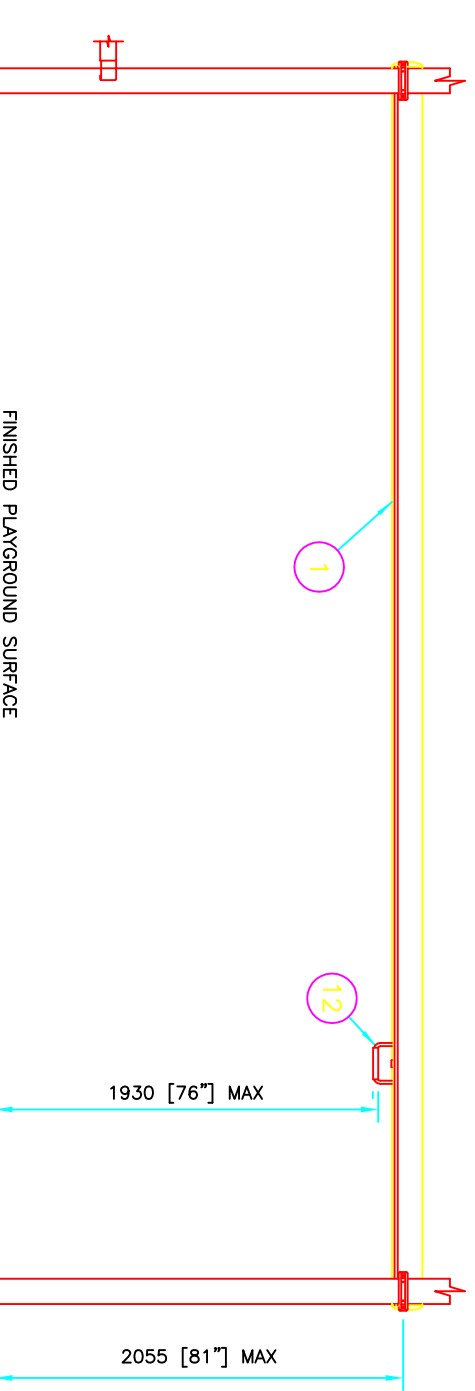
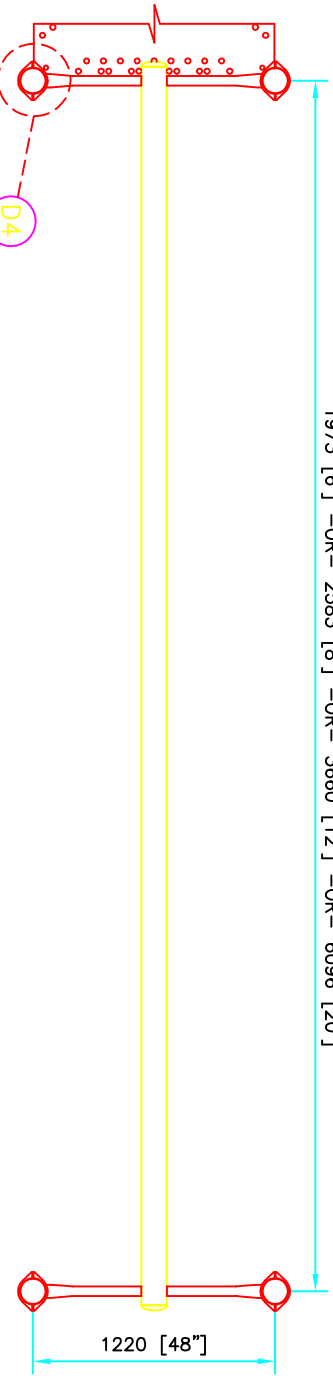
200002680
KB400008D
Sheet 1 of 2

AUTHORIZED BY:
Eric J. Clendenen
02JUN08

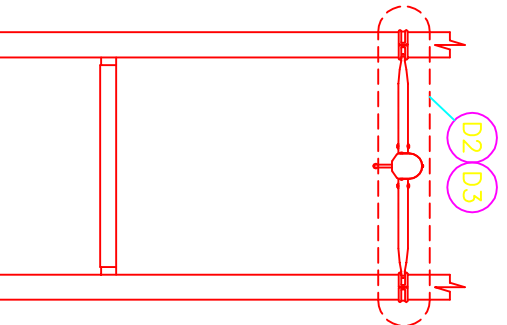


IMPORTANT
1. INSTALL ALL CLAMPS AT THE SAME HEIGHT ABOVE FINISHED SURFACE.

1973 [6'] -OR- 2583 [8'] -OR- 3660 [12'] -OR- 6096 [20']



FINISHED PLAYGROUND SURFACE



NOTE: FOR UNDERSURFACING & FOOTINGS REFER TO SEPARATE INSTRUCTIONS

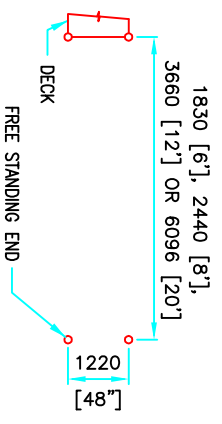


KB 6', 8', 12', & 20' STRAIGHT TRACK RIDES

200002680
KB400008D
Sheet 2 of 2

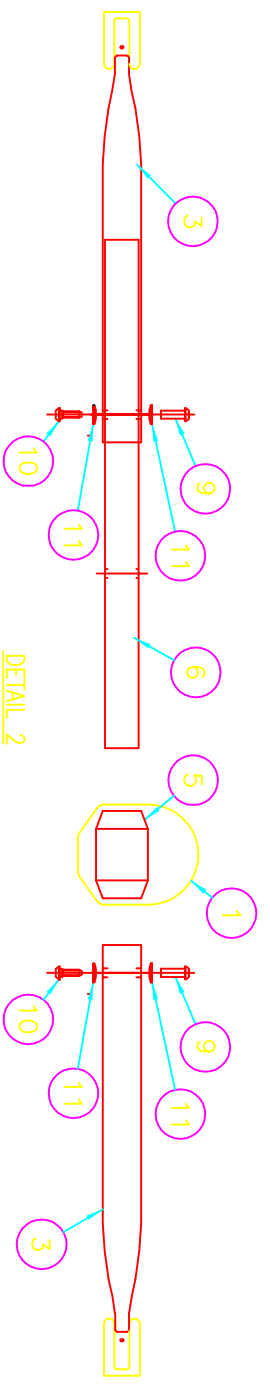
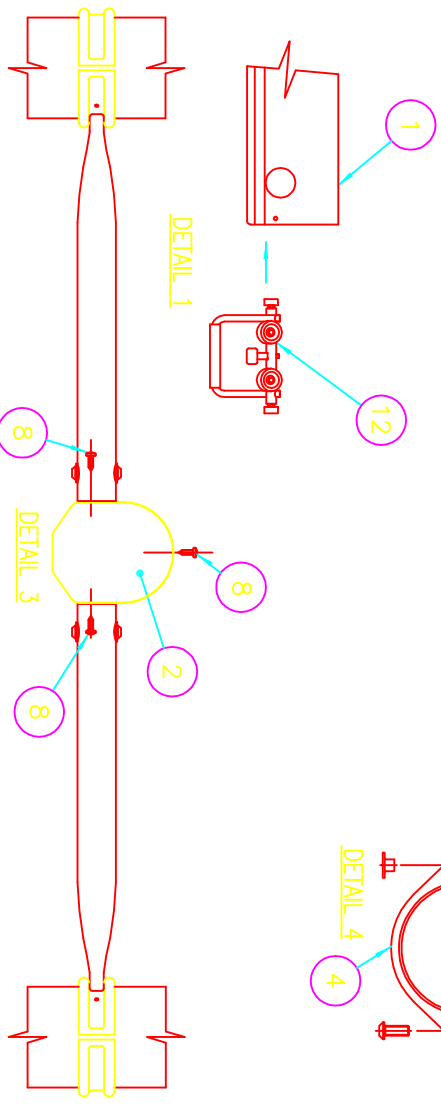
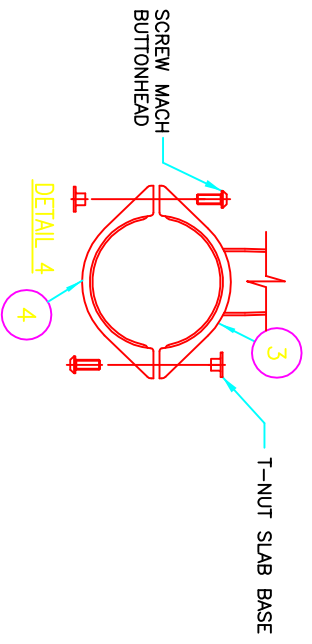
AUTHORIZED BY: *Eric J. Cauden* 02JUN08

FOOTING LAYOUT



Application
- For ages 5-12 years

- ### Installation Instructions
1. Prepare Footings.
 2. Insert track ride car into beam (Refer to Detail 1).
 3. Insert buffer into beam end and align holes with beam sides (Refer to Detail 2).
 4. Loosely Assemble one Clamp Attachment (item 3) with a support sleeve (Refer to Detail 2).
 5. Slide assembly thru beam and buffer and assemble the second Clamp Attachment to the support sleeve (Refer to Detail 2).
 6. Insert the end cap into the beam end and secure with three (3) pane head screws (Refer to Detail 3).
 7. Repeat steps 3 thru 6 for opposite end.
 8. Loosely attach clamps to posts (Refer to front of manual for clamp installation detail).
 9. Position to proper height and tighten clamps.
 10. Tighten all hardware and install clamp drive pins.
 11. Complete footings and install resilient surfacing.



Item Code	Description	Qty.
1830 [6'] TRACK RIDE	3660 [12'] TRACK RIDE	
200201092	200007036	
2440 [8'] TRACK RIDE	6096 [20'] TRACK RIDE	
200201093	200055478	

Item Code	Description	Qty.
1 -	BEAM ALUM F/TRACK RIDE	1
2 -	CAP END F/TRAK RIDE (DRILLED)	2
3 -	SUPPORT CLAMP KB TRACK RIDE BEAM	4
4 -	CLAMP HALF W/O WELDED ATTACHMENT ZN	4
6 -	200081290 SUPP SLEEVE F/TRACK RIDE BEAM	2
*7 -	200001726 ANCHOR CONCRETE WEDGE M10 X 1.50 X 100MM	4
12	200025271 TROLLEY ASSEMBLED F/TRACK RIDE	1

* USED FOR SURFACE MOUNT ONLY.

HDWR BAG F/KB TRACK RIDE (MM) 200052750

Item Code	Description	Qty.
5	300000458 BUFFER TRACK RIDE TROLLEY	2
8	200001075 SCREW PANHEAD #14 X 3/4" TYPE A ZINC PL	6
9	200002145 BOLT M8 X 1.25 FEMALE 10.3 X 30mm	4
10	200002133 BOLT M8 X 1.25 MALE 27.5mm	4
11	200008483 WASHER BOWED M11 23.5 X 11.7 X 1.6mm	8